

Fukushima Plant



ISO 9001/14001
ISO/TS16949 Acquired

- Fukushima Plant / Shirakawa-shi, Fukushima-ken
- Site area : 175,000m²
- Products : Precision Profile Rolled Steel, Roll-forming products, Stamped Products



Head Office	Shiba 5-30-7, Minato-ku, Tokyo, 108-0014 Japan Tel. +81-3-5765-8111(Rep)
Processed Products Div. Sales Sect.	Tel. +81-3-5765-3006 Fax. +81-5765-8135
Sales Development Sect.	Tel. +81-3-5765-8150 Fax. +81-5765-8135
Osaka Office	Honmachi 2-6-8 (Senba Central Build. 6F), Chuo-ku, Osaka, 541-0053 Japan Tel. +81-6-6282-6188(Rep) Fax. +81-6-6282-6136
Nagoya Office	Shinsakaecho 1-1 (Meiji Seimei Build. 6F), Naka-ku, Nagoya, 460-0004 Japan Tel. +81-52-962-0421 Fax. +81-52-971-6225
Fukushima Plant	Higashikamako aza Kazhima 1, Shiralawa-shi Fukushima-ken, 961-0303 Japan Tel. +81-248-34-2961 Fax. +81-248-34-2960
Gifu Plant	Himegaoka 2-24, Kani-shi, Gifu-ken, 509-0249 Japan Tel. +81-574-63-1071 Fax. +81-574-63-1074

Web Site : <http://www.nipponkinzoku.co.jp/>
e-mail : kakou@nipponkinzoku.co.jp

Nippon Kinzoku' s Processed Products

Precision Profile Rolled Steel



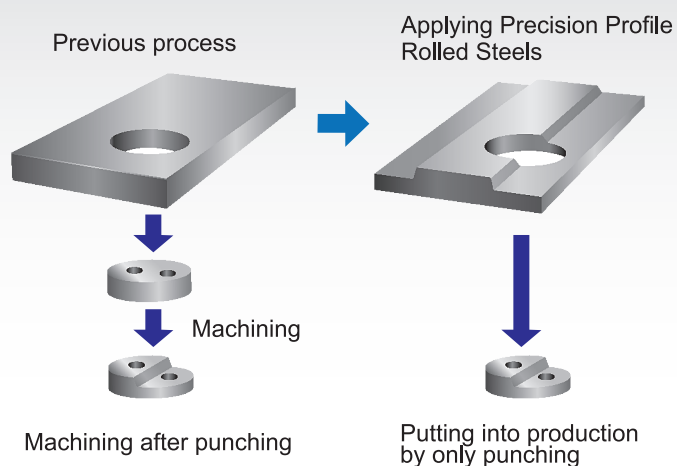


1. Changing from conventional "Machining and Cutting" to using "Precision Profile Rolled Steel" enables reducing costs and contributing to environmental protection.
2. Our quality is guaranteed throughout the entire length by using originally developed detection equipment and quality assurance system.

1. Advantages of Precision Profile Rolled Steel (30~40% cost reduction will be achieved)

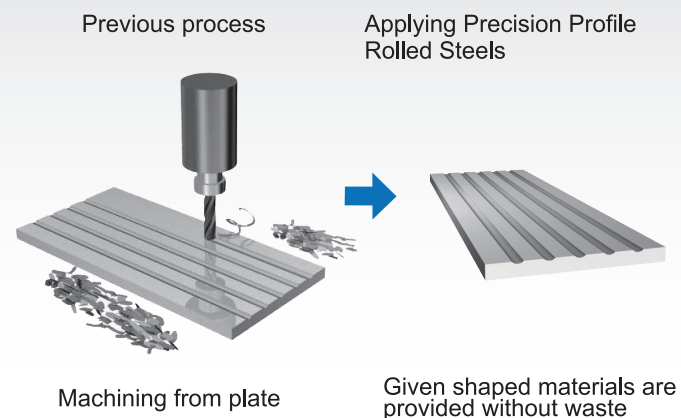
【1】Streamlining manufacturing process

Reduction of stamping load extends the die life



【2】Reducing cutting oil and machining chip, and streamlining the production process

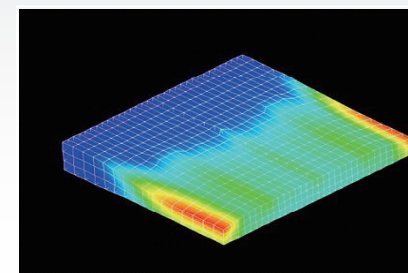
Precision Profiles are environmental friendly products



3. Technology

Design

Any shape will be obtained by using our FEM analysis in a short time and at low cost.



The rolls are designed by using finite element method (FEM analysis).

Processing

Your request becomes "the shape" by tandem rolling mill and hybrid process*.

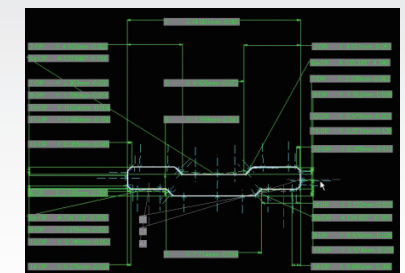
* Combined process of cold rolling, roll forming and drawing



The state-of-the-art 3 tandem 4 directional mill enables cost reduction through our high speed rolling technology.

Inspection

The qualities of dimensions and surfaces of any complex shapes are guaranteed throughout the entire length by using our original inspection equipment.

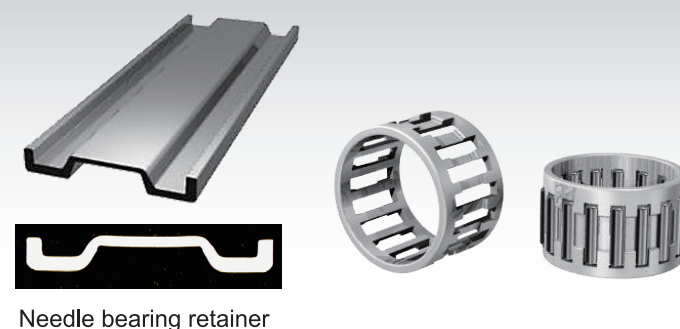


The automatic profile measurement equipment - The dimensions are measured instantaneously.

2. Examples of application

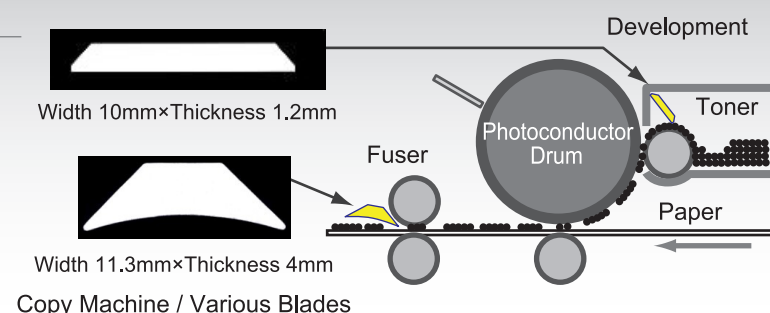
Automobile • Industrial equipment

Our sophisticated Hybrid Process (Combined process of profile rolling and roll forming) provides Precision Profile Rolled Steels with **high dimensional accuracy** [Corner radius is under 0.5mm] and **complex cross sections** [Cross sections with different thicknesses]. Our products are applied to bearing retainers for automatic transmissions which need both strength and weight-reduction.



Copy Machine

Our Precision Profile Rolled Steels applied to blades which affects printing quality of the copy machines. Our products have **highly accurate corner radius of edges** [0.25mmR] and **highly accurate straightness** [30 μm]. The secondary processing (stamping and punching) to the final shape is also available.

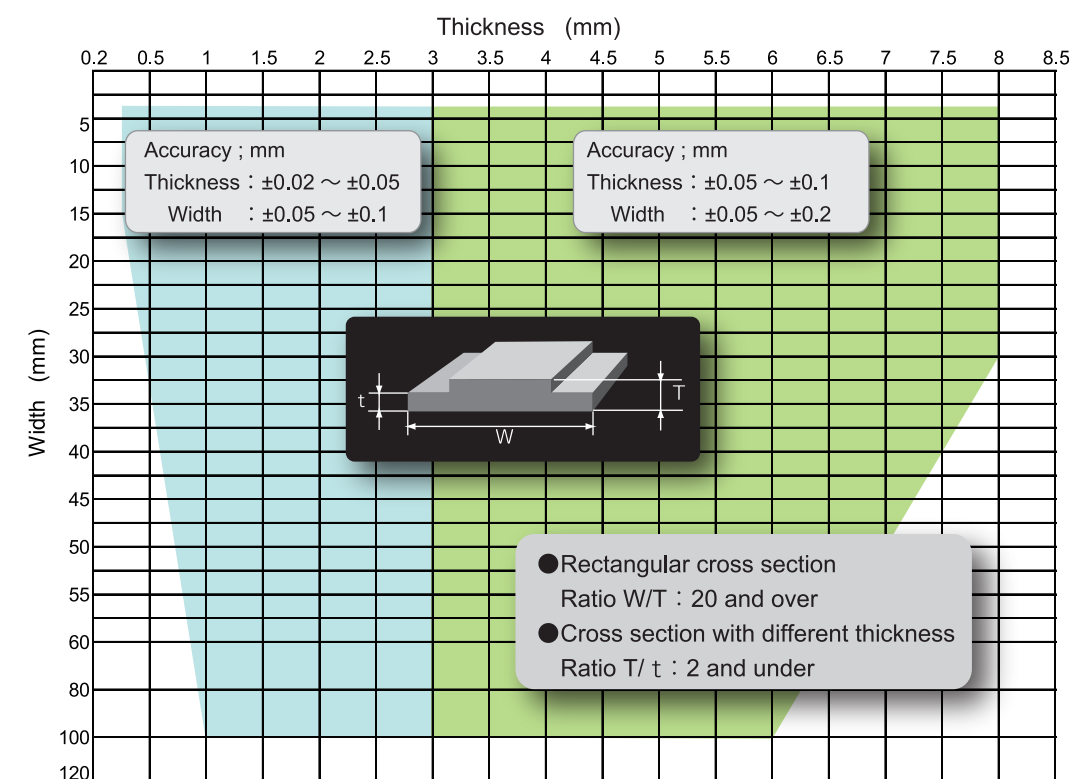


Others

Applying our unique rolling technologies and quality control management system, our Precision Profile Rolled Steels are highly acclaimed and widely used in **core parts of equipment in various fields**.



4. Available Sizes and Material Grades



※ Please consult us for other sizes and material grades.

- Austenitic Stainless Steel
SUS304、SUS304L
SUS316、SUS316L
SUS301
- Ferritic Stainless Steel
SUS430、SUS430LX
SUS444、430MA
- Martensitic Stainless Steel
SUS410S、SUS420J2
- Special Steel
SCM415、SAE1010
S50C、S60C、SK75
SK85、SKS81
- Mild Steel
SPCD、SPCE
- Non Ferrous Materials
Pure Nickel, Pure Titanium

These are examples according to JIS. It is also available according to the other standards.

<Contact info for inquiries>

Processed Products Div. (Tokyo)

●Tel : +81-3-5765-3006

●FAX : +81-3-5765-8135

Osaka Office

●Tel : +81-6-6282-6188

●FAX : +81-6-6282-6136

Nagoya Office

●Tel : +81-52-961-0421

●FAX : +81-52-971-6225

Sales Development Sect.

●Tel : +81-3-5765-8150

●FAX : +81-3-5765-8135

《E-Mail : kakou@nipponkinzoku.co.jp》

Web Site : <http://www.nipponkinzoku.co.jp/>》



日本金属株式会社 NIPPON KINZOKU CO., LTD.